

VascularAccessChild Trainer

VASCULAR ACCESS TRAINER



**Ultrasound
Guided**

The VascularAccessChild is the only high fidelity soft tissue pediatric simulator designed to train central line placement. This simulated five year old child includes three access sites (Internal Jugular, Subclavian and Femoral), replaceable tissues, and ultrasound compatibility during catheter placement.

SKILL DEVELOPMENT:

- › Central venous access using the femoral vein route
- › Using ultrasound guidance during catheter placement
- › Palpating anatomical landmarks significant to the procedure

ULTRASOUND COMPATIBLE:

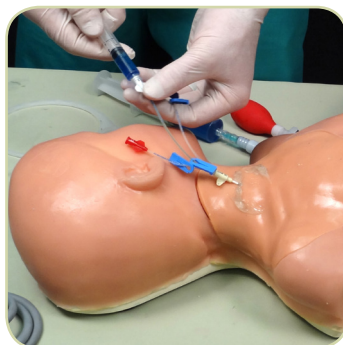
- › Responds to ultrasound for guidance during catheter placement
- › Hand pump that provides arterial pulse

FEATURES AND BENEFITS:

- › Anatomically correct, soft tissue five year old with internal and external landmarks
- › Differentiates arterial and venous blood to show positive or negative results
- › Self sealing veins and skin for multiple practices
- › Natural tissue resistance and flashback of blood
- › Replaceable tissue sets allow for multiple uses
- › Quick set up: tissues are self-contained and come pre-filled with blood
- › Arterial pulse and proper landmarks are present to help avoid and detect errors
- › Easily adjustable venous pressure to simulate complications



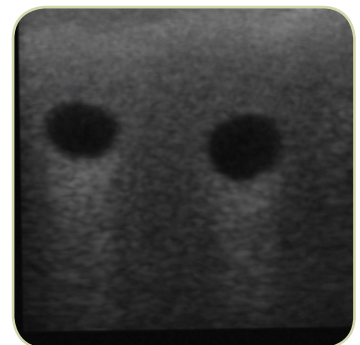
Palpate Arterial Pulse



**Self-sealing, Durable
Tissue for Many Uses**

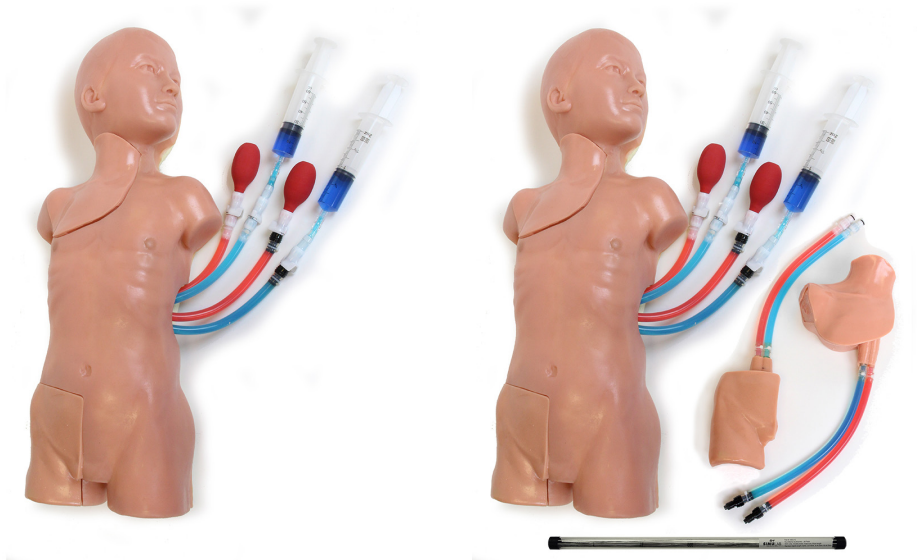


**Full Central Venous
Catheterization**



Ultrasound Imaging

VascularAccessChild Trainer Packages



VASCULARACCESSCHILD

- › VascularAccessChild Base
- › Replaceable Tissues (femoral/neck)
- › Simulated Arterial/Venous Blood
- › Fill Port with Funnel
- › Carrying Case
- › User's Guide

PART #: VAC-30

VASCULARACCESSCHILD TRAINING PACKAGE

Package includes:

- › VascularAccessChild Trainer
- › One extra each (femoral and neck) replaceable tissues
- › 25 non-sterile guidewires.

PART #: VCTP-30



CVC FAMILY PACKAGE

Package includes:

- › CentralLineMan Trainer
- › FemoraLineMan Trainer
- › VascularAccessChild Trainer
- › Extra replaceable tissue for each (Both neck and femoral tissues for Vascular Access Child)

PART #: VAFP-30

FOR MORE INFORMATION:

Visit our web site to view videos of all of our products.



Seattle, WA 98168 USA
866-400-1260 • 206-297-1260
www.simulab.com