

PICCLineMan™ System



VASCULAR ACCESS TRAINER



PICCLineMan
Shown with optional
Articulating Head

NEW

PICCLineMan provides realistic ultrasound-guided PICC line training for entry-level to expert learners.

Skill Development

- ▶ Palpable landmarks to learn proper catheter measurement.
- ▶ Realistic ultrasound-guidance to learn vein isolation/selection.
- ▶ Complete PICC line procedure including guidewire insertion, dilation, and full cannulation.
- ▶ Three different insertion sites—including advanced placement into the Brachial Vein.
- ▶ Self-sealing, durable ultrasound-compatible Normal, Obese and Geriatric Replaceable Tissue options allow assessing patient variance in vessel depth and sizing.
- ▶ Digital chest X-rays allow students to practice confirming line placement or complications.

Additional Features

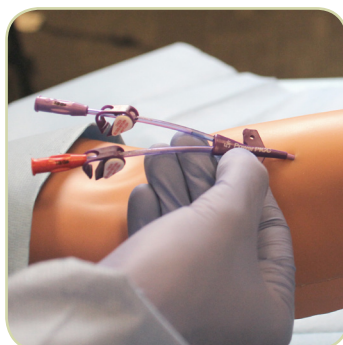
- ▶ Arterial pulsation and vein compression are visible under real-time ultrasound.
- ▶ Positive flashback of simulated blood upon successful venous access.
- ▶ Median Nerve provides an adjacent structure in the Brachial line placement and supports ultrasound identification of anatomical structures.
- ▶ The optional Articulating Head (AH-10) enhances realism and allows for discussion of complications.

Palpable Landmarks: Antecubital Fossa, Acromion, Humeral Head, Clavicle, Sternum, 1st-3rd Intercostal Spaces, and Ribs 1-7.

Ultrasoundable Anatomy: Basilic Vein, Brachial Vein, Cephalic Vein, Median Nerve, Brachial Artery, and Humerus



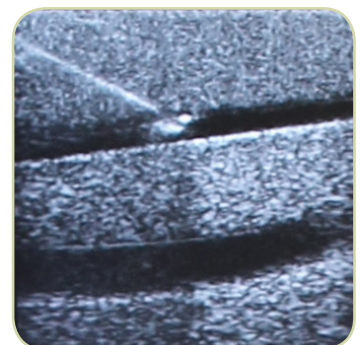
Ultrasound Guided with Appropriate Landmarks



Self-sealing, Durable Tissue for Many Uses



Full Central Venous Catheterization



Realistic Ultrasound Imaging

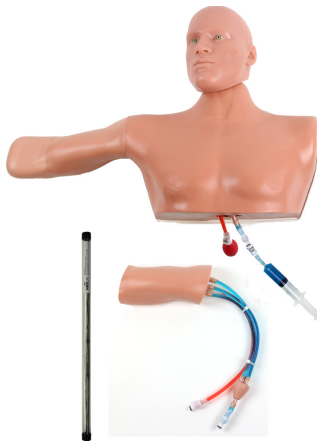
PICCLINEMAN SYSTEMS, TISSUES AND TRAINING PACKAGES



PICCLINEMAN SYSTEM & ARTICULATING HEAD

- › PICCLineMan Body Form
- › Articulating Head
- › Replaceable Tissue
- › Multiple X-Rays showing Catheter insertion placement
- › Simulated Arterial/Venous Blood
- › Fill Port with Funnel
- › Carrying Case
- › User's Guide

PART #: PLM-11



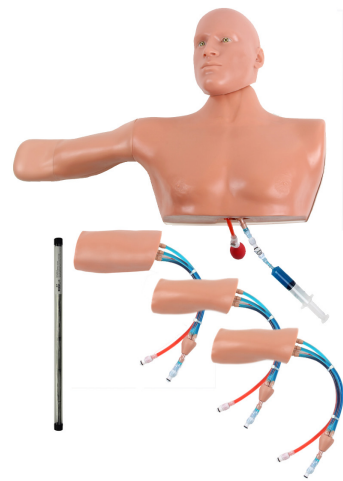
PICCLINEMAN TRAINING PACKAGE & ARTICULATING HEAD

- › PICCLineMan
- › Articulating Head
- › One Extra Replaceable Tissue
- › 25 Non-Sterile guidewires

PART #: PLMP-11

PICCLINEMAN TRAINING PACKAGE (No Articulating Head)

PART #: PLMP-10



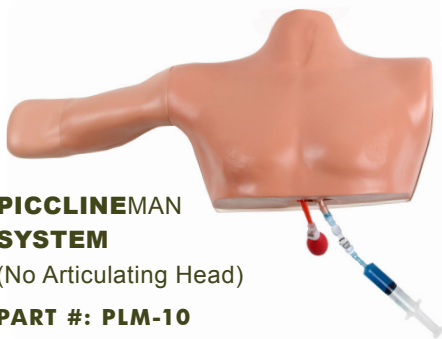
DELUXE PICCLINEMAN TRAINING PACKAGE & ARTICULATING HEAD

- › PICCLineMan
- › Articulating Head
- › Extra Normal Replaceable Tissue
- › Extra Obese Replaceable Tissue
- › Extra Geriatric Replaceable Tissue
- › 25 Non-Sterile Guidewires

PART #: DPLMP-11

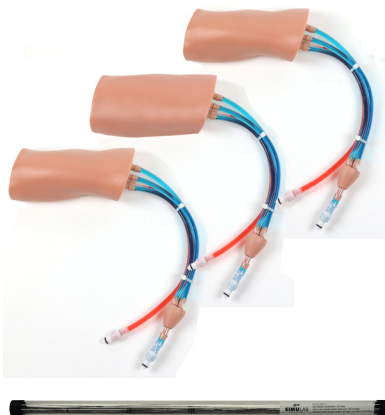
DELUXE PICCLINEMAN TRAINING PACKAGE (No Articulating Head)

PART #: DPLMP-10



PICCLINEMAN SYSTEM (No Articulating Head)

PART #: PLM-10



REPLACEABLE TISSUES

NORMAL TISSUE
PART #: PLMT-10

OBESSE TISSUE
PART #: PLMOT-10

GERIATRIC TISSUE
PART #: PLMGT-10

NON-STERILE GUIDE WIRES FOR PICCLINEMAN (25 PACK)

PART #: NSG-20

FOR MORE INFORMATION:

Visit our web site to view videos of all of our products.



Seattle, WA 98168 USA
866-400-1260 • 206-297-1260
www.simulab.com