

# FemoraLineMan Trainer

## VASCULAR ACCESS TRAINER



FemoraLineMan offers an effective training solution for femoral line placement. This trainer utilizes the same highly acclaimed tissue properties as CentralLineMan™ and allows medical professionals to train using real-time ultrasound guidance during catheter placement.

### SKILL DEVELOPMENT:

- › Central venous access using the femoral vein route
- › Using ultrasound guidance during catheter placement
- › Palpating anatomical landmarks significant to the procedure

### ULTRASOUND COMPATIBLE:

- › Allows ultrasound imaging for guidance during needle placement
- › Provides highly realistic image quality

### FEATURES AND BENEFITS:

- › Anatomically correct human pelvis with identifiable landmarks, including the anterior superior iliac spine, the pubic tubercle, and the inguinal ligament
- › Durable replaceable tissue sets that allow for multiple uses
- › Self sealing vessels and skin allow for multiple cannulations per tissue
- › Quick set up: tissues are self-contained and come pre-filled with fluid, red indicates the artery and blue indicates the vein
- › Vessels are long enough to allow for full catheterization
- › Arterial hand pump that creates a realistic arterial pulse, which can be palpated or identified with ultrasound



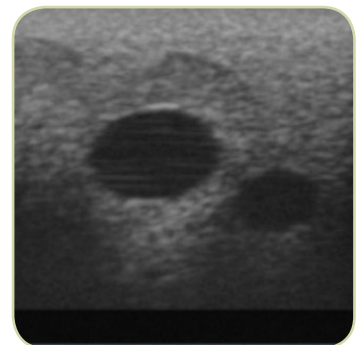
**Palpate Arterial Pulse**



**Self-sealing, Durable Tissue for Many Uses**



**Full Central Venous Catheterization**



**Ultrasound Imaging**

## FEMORALINEMAN PRODUCT AND TRAINING PACKAGES



### FEMORALINEMAN

- › FemoralLineMan Base
- › Replaceable Tissue
- › Simulated Arterial/Venous Blood
- › Fill Port with Funnel
- › Carrying Bag
- › User's Guide

**PART #: FLM-40**



### FEMORALINEMAN TRAINING PACKAGE

Package includes:

- › FemoralLineMan Trainer
- › One extra replaceable tissue
- › 25 non-sterile guidewires.

**PART #: FLTP-20**



### VASCULAR ACCESS PACKAGE W/O ARTICULATING HEAD

Package includes:

- › CentralLineMan Trainer
- › Articulating Head
- › FemoralLineMan Trainer
- › Extra replaceable tissue for each.

**PART #: CVC-20**



### VASCULAR ACCESS PACKAGE WITH ARTICULATING HEAD

Package includes:

- › CentralLineMan Trainer
- › Articulating Head
- › FemoralLineMan Trainer
- › Extra replaceable tissue for each.

**PART #: CVC-21**



### CVC FAMILY PACKAGE

Package includes:

- › CentralLineMan Trainer
- › FemoralLineMan Trainer
- › VascularAccessChild Trainer
- › Extra replaceable tissue for each (Both neck and femoral tissues for Vascular Access Child)

**PART #: VAFP-20**

### FOR MORE INFORMATION:

Visit our web site to view videos of all of our products.

  
**SIMULAB**  
CORPORATION

Seattle, WA 98119 USA  
866-400-1260 • 206-297-1260  
[www.simulab.com](http://www.simulab.com)